

# THE BEST SOURCE FOR DECK ACCESS PLATES

# Beckson®



- WATERTIGHT
- NO JAMMING
- STRONG AND DURABLE
- EASY TO USE
- VARIETY OF SIZES, COLORS, TEXTURES,
- YEARS OF DEPENDABILITY

**ALL 4", 6", 8" BECKSON DECK PLATES:**

**5 CERTIFICATIONS.  
THEY'RE WATERTIGHT!**

Certified by independent lab testing to exceed standards:

- 1 ABYC H-3 WATERTIGHTNESS**
- 2 ABYC H-4**
- 3 NEMA 250 6P SUBMERGENCE**
- 4 ISO 12216**
- 5 ISO 11812**

**DRAIN PLUGS  
SCREW OUT DECK PLATES  
PRY OUT DECK PLATES  
VENT TOP DECK PLATES**

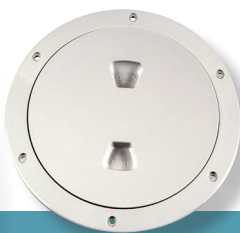
**TWIST OUT ACCESS PLATES  
STOWAWAY DECK PLATES  
COVER PLATES  
ACCESSORIES**

DP63-N

DP84-B

DP60-W

DP40-B-C

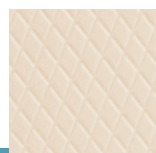


**THREE SURFACE TEXTURES**

**DIAMOND**

**SMOOTH**

**PEBBLE**



**CERTIFIED WATERTIGHT**

## PRY-OUT DECK PLATES: 6", 8"

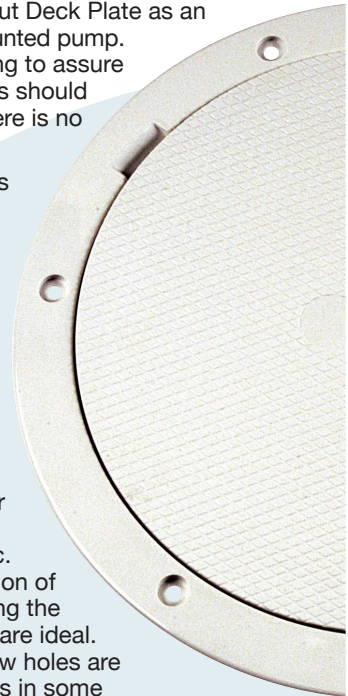
### 6" PRY-OUT DECK PLATES

MODEL#	COLOR	CENTER STYLE
DP61-B	BLACK	SMOOTH*
DP61-B-C	BLACK/CLEAR	SMOOTH*
DP61-W	WHITE	SMOOTH*
DP61-W-C	WHITE/CLEAR	SMOOTH*
DP63-B	BLACK	PEBBLE
DP63-N	BEIGE	PEBBLE
DP63-W	WHITE	PEBBLE
DP65-B	BLACK	DIAMOND
DP65-N	BEIGE	DIAMOND
DP65-W	WHITE	DIAMOND

OEM Note: Special color/materials and logo centers available.

Beckson developed the first Pry-Out Deck Plate as an access cover to a permanently mounted pump. Designed with an extra heavy O-ring to assure a watertight fit, Pry-out Deck Plates should be installed only in areas where there is no internal pressure (oil-canning.)

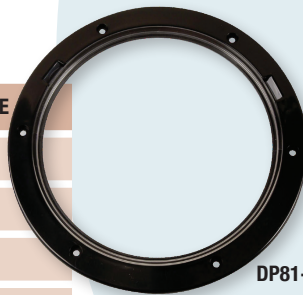
Our certified watertight Deck Plates are manufactured with textured or smooth surfaces for different installation requirements. With their assist for better traction, the Diamond Pattern and the Pebble Pattern Deck Plates are for areas with foot traffic. Their non-skid pattern extends across the center, eliminating the edge ring that traps dirt and debris. Rain and spray keep the surface clean. Our smooth surface Deck Plates are for use in vertical applications and in places where there is no foot traffic. For visual inspection and observation of controls or gauges without removing the plate, Beckson clear center plates are ideal. Thin trim rings with or without screw holes are available for 6" Pry-Out deck plates in some color/material combinations.



DP85-W

### 8" PRY-OUT DECK PLATES

MODEL#	COLOR	CENTER STYLE
DP81-B	BLACK	SMOOTH*
DP81-B-C	BLACK/CLEAR	SMOOTH*
DP81-W	WHITE	SMOOTH*
DP81-W-C	WHITE/CLEAR	SMOOTH*
DP83-B	BLACK	PEBBLE
DP83-N	BEIGE	PEBBLE
DP83-W	WHITE	PEBBLE
DP85-B	BLACK	DIAMOND
DP85-N	BEIGE	DIAMOND
DP85-W	WHITE	DIAMOND

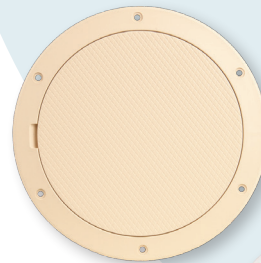


DP81-B-C

**\* BE SAFE! Choose textured surface deck plates for pedestrian areas! Smooth Deck Plates are made for vertical applications and areas with no foot traffic. They can be slippery when wet.**

### SPECIAL ORDERS

Call us for more information if you require colors other than what you see in this catalog. As always, we continue to produce special color deck access plates for boatbuilders who want dependable, top quality products.



DP65-N



DP63-W

**\* We recommend attaching centers with our safety chain. See page 21.**

**DIMENSIONS OF PRY-OUT DECK PLATES WITH STANDARD TRIM AND THIN RINGS**  
All plates include gasket. Use #8 pan head screws.

**6"**

OD: 8-1/8" (20.6 cm)  
ID: 6-3/16" (15.7 cm)  
Hole Cut: 6-1/2" (16.5 cm)  
Additional Gasket D6P-G  
Thin Ring OD: 7-1/2" (19.06 cm)  
For Thin Ring add T to Model #

**8"**

OD: 10" (25.4 cm)  
ID: 8" (20.3 cm)  
Hole Cut: 8-1/2" (21.6 cm)  
Additional Gasket D8P-G  
No Thin Ring for 8" deck plates

**\* OD: OUTSIDE DIMENSION  
ID: INSIDE DIMENSION**

**CERTIFIED WATERTIGHT**

## SCREW-OUT DECK PLATES: 4", 6", 8"



The Beckson Screw-Out Deck Plate was designed to provide access without the use of tools, with a single start, non-jamming (no cross-thread), extra strong, self-cleaning buttress thread. A self-aligning center and an innovative gasket assure a watertight seal. A unique back-up sealing wall leaves the plate water resistant, even if the gasket is missing.

A screw-out plate should be used in compartments where a change in air pressure due to temperature or oil canning can occur. Deck plates are used for access, inspection, and clean out for compartments and tanks, or just as general access for shut-off valves or back fastenings. Clear center plates permit visual inspection and observation of controls or gauges without removal of the plate. Thin trim rings with or without screw holes are available for 4" and 6" Screw-Out deck plates in some color/material combinations.

OEM Note: Special color/materials and branded centers are available.

DP84-B



**BE SAFE!** Choose textured surface deck plates for pedestrian areas!

### 4" SCREW-OUT DECK PLATES

MODEL#	COLOR	CENTER STYLE
DP40-B	BLACK	SMOOTH*
DP40-B-C	BLACK/CLEAR	SMOOTH*
DP40-N	BEIGE	SMOOTH*
DP40-W	WHITE	SMOOTH*
DP40-W-C	WHITE/CLEAR	SMOOTH*
DP42-B	BLACK	PEBBLE
DP42-N	BEIGE	PEBBLE
DP42-W	WHITE	PEBBLE
DP44-B	BLACK	DIAMOND
DP44-N	BEIGE	DIAMOND
DP44-W	WHITE	DIAMOND



### 6" SCREW-OUT DECK PLATES

MODEL#	COLOR	CENTER STYLE
DP60-B	BLACK	SMOOTH*
DP60-B-C	BLACK/CLEAR	SMOOTH*
DP60-N	BEIGE	SMOOTH*
DP60-W	WHITE	SMOOTH*
DP60-W-C	WHITE/CLEAR	SMOOTH*
DP62-B	BLACK	PEBBLE
DP62-N	BEIGE	PEBBLE
DP62-W	WHITE	PEBBLE
DP64-B	BLACK	DIAMOND
DP64-N	BEIGE	DIAMOND
DP64-W	WHITE	DIAMOND

U.S. Pat No. 6,364,146 B1

### 8" SCREW-OUT DECK PLATES

MODEL#	COLOR	CENTER STYLE
DP80-B	BLACK	SMOOTH*
DP80-B-C	BLACK/CLEAR	SMOOTH*
DP80-N	BEIGE	SMOOTH*
DP80-W	WHITE	SMOOTH*
DP80-W-C	WHITE/CLEAR	SMOOTH*
DP82-B	BLACK	PEBBLE
DP82-N	BEIGE	PEBBLE
DP82-W	WHITE	PEBBLE
DP84-B	BLACK	DIAMOND
DP84-N	BEIGE	DIAMOND
DP84-W	WHITE	DIAMOND

**DIMENSIONS OF SCREW-OUT DECK PLATES WITH STANDARD TRIM AND THIN RINGS** All plates include gasket . Use #8 pan head screws.

4"	6"	8"
OD: 6-1/8" (15.6 cm) ID: 4" (10.2 cm) Hole Cut: 4-1/2" (11.4 cm) Additional Gasket D4S-G Thin Ring OD: 5-5/8" (14.3 cm) For Thin Ring add T to Model #	OD: 8-1/8" (20.6 cm) ID: 6" (15.2 cm) Hole Cut: 6-1/2" (16.5 cm) Additional Gasket D4S-G Thin Ring OD: 7-1/2" (19.1 cm) For Thin Ring add T to Model #	OD: 10" (25.4 cm) ID: 7-5/8" (19.4 cm) Hole Cut: 8-1/2" (21.6 cm) Additional Gasket D8S-G No Thin Ring for 8" deck plates



## STOWAWAY™ DECK ACCESS PLATES WITH BAGS

4", 5", 6" and 8" bags  
Dry - Hidden Storage

Our 4", 5", 6" and 8" Screw-out and Twist-out Deck Plates can double as dry storage areas! The nylon drawstring bag features a rigid ring that fits neatly into the deck plate equipped with a retaining ring and secures the bag. Bags are removable for access below deck and to carry items ashore. Perfect for storing and carrying watches, wallets or any item that could be lost overboard. Extra long bags available for fender storage.



### DECK ACCESS PLATE DIMENSIONS ON PAGE 14 AND 15

MODEL #	COVER COLOR	SIZE	COVER TYPE	BAG TYPE
DP40BB	BLACK	4"	SCREW-OUT	12" STANDARD
DP40BW	WHITE	4"	SCREW-OUT	12" STANDARD
DP50BB	BLACK	5"	TWIST-OUT	12" STANDARD
DP50BN	BEIGE	5"	TWIST-OUT	12" STANDARD
DP50BW	WHITE	5"	TWIST-OUT	12" STANDARD
DP50FB	BLACK	5"	TWIST-OUT	20" FENDER
DP50FW	WHITE	5"	TWIST-OUT	20" FENDER
DP60BB	BLACK	6"	SCREW-OUT	12" STANDARD
DP60BW	WHITE	6"	SCREW-OUT	12" STANDARD
DP60FB	BLACK	6"	SCREW-OUT	24" FENDER
DP60FW	WHITE	6"	SCREW-OUT	24" FENDER
DP80BW	WHITE	8"	SCREW-OUT	12" STANDARD
DP80BB	BLACK	8"	SCREW-OUT	12" STANDARD
DP82BW	WHITE	8"	SCREW-OUT	12" STANDARD

Above models have smooth centers. Also available with pebble and diamond centers. Please call us to order.

### CONVERSION KITS AVAILABLE

MODEL#	
D4SKBAG	BAG KIT FOR 4"
D5SKBAG	BAG KIT FOR 5"
D6SKBAG	BAG KIT FOR 6"
D8SKBAG	BAG KIT FOR 8"

Standard Red Nylon Drawstring Bag Length 12" for all diameters.

Each kit includes a bag retaining ring to convert Beckson Screw-Out Deck Plates to accept a drop-in Drawstring Ditty Bag. For ABS plates only.

**FRESH GASKETS AVAILABLE SEPARATELY.**  
See page 20.

**\* DON'T LOSE YOUR CENTERS!**  
Use Safety Chain, page 21.

## VENT TOP DECK PLATE

Add extra ventilation with this adaptable deck plate. Each unit includes both vent center and standard smooth center. Cowl vent may be removed and standard smooth center plate installed to keep deck clear and watertight. White only. Standard smooth center can be either solid white or clear. Available in both pry-out and screw-out models. Select low-rise (LP) or high rise (HP).



6"	OD: 8-1/8" (20.6 cm) PASSAGE: 6-3/16" (15.2 cm) HOLE CUT: 6-1/2" (16.5 cm)	SCREW-OUT			PRY OUT		
		MODEL#	HEIGHT	CENTER	MODEL#	HEIGHT	CENTER
		DP-LP-6S	1-3/4" (4.5 cm)	WHITE	DP-LP-6	1-3/4" (4.5 cm)	WHITE
		DP-LPC-6S	1-3/4" (4.5 cm)	CLEAR	DP-LPC-6	1-3/4" (4.5 cm)	CLEAR
		DP-HP-6S	3" (7.62 cm)	WHITE/CLEAR	DP-HP-6	3" (7.62 cm)	WHITE/CLEAR
		DP-HPC-6S	3" (7.62 cm)	CLEAR	DP-HPC-6	3" (7.62 cm)	CLEAR

\* OD: OUTSIDE DIMENSION  
ID: INSIDE DIMENSION



DP50-W



DP50-B

OEM Note:  
Special colors  
and branded centers  
are available.



## BECKSON 5" TWIST-OUT PLATE

**Overlapping Cover Conceals Fasteners - For A Clean Modern Look On Any Bulkhead.**

Perfect for non load-bearing areas with no foot traffic, Beckson's innovative 5" deck access plate was designed to conceal its mounting fasteners under the quick twist cover. The low profile cover is self-centering and quickly locks in place with a 1/8 twist. Three separate sealing areas, each designed to chase water away from the plate opening, assure a tight closure. The bayonet threads are non-jamming, self-cleaning, and lift the center for easy removal. These 5" Twist-Out deck plates are available with Stowaway Bags.

<b>5"</b>	<b>OD:</b> 7" (17.8 cm)	<b>MODEL#</b>	<b>COLOR</b>
	<b>ID:</b> 5" (12.7 cm)	DP50-W	WHITE
	<b>HOLE CUT:</b> 5-1/2" (14 cm)	D050-B	BLACK
		DP50-N	BEIGE

## BECKSON COVER PLATES

Not just for boats! Easily and quickly seal and hide installation holes, instrument panel holes and other access holes where ready entry is not a requirement. Molded of high impact marine quality plastic, with ultraviolet inhibitors for prolonged service, Cover Plates conceal holes up to 5" (13 cm) in diameter and mount with only four screws. High-tech matte finish provides a rich looking installation.

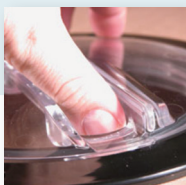


<b>6 1/2"</b>	<b>OD:</b> 6-1/2" (16.5 cm)	<b>MODEL#</b>	<b>COLOR</b>
	<b>ID:</b> 5-1/8" (13 cm)	CVR64AB	BLACK
	<b>COVERS:</b> 5" hole	CVR64AW	WHITE
		CVR64AN	BEIGE
<b>4 1/2"</b>	<b>OD:</b> 4-1/2" (11.4 cm)	M-10	WHITE
	<b>ID:</b> 3-1/2" (8.9 cm)		
	<b>COVERS:</b> 3-1/4" hole	M-10-B	BLACK

**NEW!**

## 6" HIGH-TORQUE ACCESS PLATE

MODEL# DP60-B-CC Black/Clear | DP60-W-CC White/Clear



In high pressure, near-vacuum conditions, screw-out centers sometimes became difficult to open. Beckson solved the problem with this watertight high-torque center. Retains the clarity and toughness of the standard center, but has deeper finger holes and a full pry, raised channel to help seal and unseal the unit. Not for decks. Fasteners (6) #8 Pan Head.

**O.D.** 8-1/8" (20.6 cm) **I.D.** 6" (15.2 cm) **HOLE CUT:** 6-1/2" (16.5 cm)



## THE ART OF DECK PLATE GASKET INSTALLATION, INSPECTION & MAINTENANCE

DECK PLATE INSTALLATION INSTRUCTIONS ARE INCLUDED WITH CONSUMER PRODUCT OR MAY BE DOWNLOADED FROM [WWW.BECKSON.COM](http://WWW.BECKSON.COM)

### • ABOUT BECKSON DECK PLATE GASKETS

The Gasket is an important component of the Deck Plate Set. In a **BECKSON SCREW-OUT DECK PLATE**, the gasket ensures the seal between the Mounting Ring (Receptacle) and the Center (Insert) after threaded closure. For a **BECKSON PRY-OUT DECK PLATE**, the gasket provides both the seal and the closure. For the seals to be at maximum, the gaskets need to be maintained in good condition. Periodic inspection of the integrity of the three component parts is necessary and should be added to your pre-trip checklist. Beckson **DECK PLATE KEYS** help to ensure that Screw-Out Plates are tightly closed and that Pry-Out centers are removed without damage to the Mounting Ring or Center.

### • BECKSON SCREW-OUT DECK PLATES:

While the buttress threads of the Screw-Out Deck Plates are to some degree self-cleaning, sand, dirt, grease and other particles and contaminants may still accumulate. This can make the center difficult to open or keep it from closing properly.

If these conditions are present there may be debris between the gasket and the mating surfaces. Remove the Center and clean the threads and the underside of the top lip of the Center. Be sure to clean the threads and thread walls of the Mounting Ring as well. Remove the Gasket and clean both the gasket and the gasket channel and gently re-install the gasket. When installing Screw-Out 4" and 6" Gaskets, be sure that the knock-out marks (little circles) are facing down into the channel. Lay the Gasket gently into the channel and follow it around with your finger to ease it into the channel. Be careful not to twist the Gasket during the installation. Screw-Out Centers should be tightly closed. Threads and Gaskets can be lubricated with Teflon or Silicone Grease or Silicone Spray. Use sparingly. **Petroleum products like WD-40 and CRC-666 and Vaseline should never be used. If the Gasket appears worn or damaged, install a new Gasket.**

### • BECKSON PRY-OUT DECK PLATES:

The Beckson Pry-Out Deck Plate Gasket provides both the closure and seal for the Deck Plate Set. The Gasket should be inspected with every opening of the plate. If the Gasket is dirty, remove and clean the gasket and the gasket groove with soap and water and reinstall the gasket. Also clean the mating surfaces of the Mounting Ring or Center with soap and water.

**If the Mounting Ring or Center has been damaged or gouged by using an improper tool to remove the Center, a new Deck Plate should be installed. If the gasket appears worn, damaged or flattened, install a new gasket.**

When re-installing, the center should press in with some resistance. If it feels loose, use a new Beckson Gasket.

**\* It's a good idea to keep genuine Beckson gasket spares aboard with other safety equipment; they can be purchased directly from Beckson by phone or online.**

The Gasket is a vital component of the Deck Plate Set. You'll find more information about deck plate gasket maintenance and installation on our website, [www.beckson.com](http://www.beckson.com), where you may order them directly. To ensure the integrity of our deck plates, purchase only genuine Beckson gaskets!

### BECKSON DECK PLATE GASKETS

MODEL#	SCREW OUT
D4S-G	4"
D6S-G	6"
D8S-G	8"

MODEL#	TWIST-OUT
D5S-G	5"

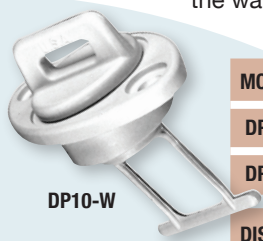
MODEL#	PRY-OUT
D6P-G	6"
D8P-G	8"

**“** We have happily used Beckson deck plates for years on our O'Day 37 to get to an almost inaccessible engine room for checking fluids and temperature gauges and so much more. I have always trusted them to keep water out while keeping the captain from having to crawl into the engine room upside down . . .

Anne and Bob Pounds, PA, veteran sailors: Eastern Seaboard, Chesapeake Bay

## THE INDISPENSIBLE DRAIN PLUG

Avoid that sinking feeling at the boat ramp! Beckson's best-selling screw-type drain plug with self-cleaning thread, O-ring, and super strength retaining legs secure the center while draining. Works best if it's in place **before** you put your boat in the water! Be sure to keep a few spare centers on hand. These plugs are great for small boats, fish wells, coolers, ice chests, water tanks.



MODEL#	DESCRIPTION	SIZE	O.D
DP10-B	BLACK DRAIN PLUG W/GASKET	HOLE CUT 1" (2.54 cm)	1-1/4" x 2" (3.18 cm x 5.08 cm)
DP10-W	WHITE DRAIN PLUG W/GASKET	HOLE CUT 1" (2.54 cm)	1-1/4" x 2" (3.18 cm x 5.08 cm)
DIS-CTR-B	BLACK CENTER COMPONENT ONLY		
DIS-CTR-W	WHITE CENTER COMPONENT ONLY		
DPS1-B	INSTALLATION SEAL FOR DP10-B		



## DECK PLATES WITH THIN RINGS

Sometimes space for a deck plate may be extremely limited. For these locations, Beckson has developed outside rings for the 4" and 6" Screw-Out plates and for 6" Pry-Out plates that are at least 1/2" (1.3 cm) smaller than the standard diameter deck plate. Thin Ring Screw-Out plates feature fastenerless mounting, but may be drilled and counter-bored for normal pan head screws. Thin Rim Pry-Out plates are pre-drilled and counter-bored for mounting screws.

To order Thin Rim 4" and 6" plates, add "T" to the Deck Plate Model#



Thin Rim 6" Screw-Out Deck Access Plate

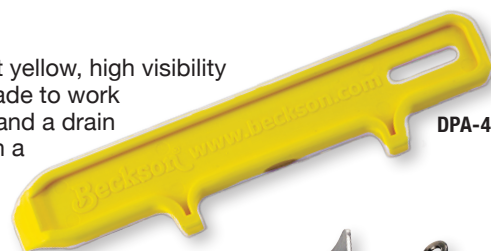
Standard Rim 6" Screw-Out Deck Access Plate

## SPECIAL ORDER

Call us for more information if you require colors other than what you see here. As we have in the past, we continue to produce special order deck access plates for boatbuilders who want dependable, top quality products.

## DECK PLATE ACCESSORIES

**DPA-4 DECK PLATE KEY.** Versatile deck access plate tool. You need this bright yellow, high visibility Deck Plate Key! Made of high strength acetal resin, it's a 3-in-1 multi-tool made to work with screw-out, pry-out, and twist-out plates. The pry-out tool is at one end and a drain plug slot wrench on the other end, which can also be used to hang the key in a handy spot. Two nubs on the tool edge are for use as a spanner wrench with screw-out and twist-out deck plates. Approximately 7" long. You might want to buy extras. They make great gifts for the boaters in your life!



DPA-4

**DPA-1 DECK PLATE PRY BAR.** For proper removal of the center of 6" or 8" pry-out deck access plates. Made of sturdy aluminum, it comes with an 8" (20.3 cm) 8-18 corrosion and wear-resistant stainless steel chain, and can be kept nearby in a safe convenient place, such as our **HH-81 Soft-Mate Multipurpose Mini-Holder.** (Page 42)



DPA-1

**DPA-2 DECK PLATE SAFETY CHAIN. DON'T LOSE YOUR CENTER!** 8" (20.3cm) 1-18 stainless steel. For 4", 6" and 8" screw-out as well as 6" and 8" pry-out deck access plates. The underside of the Beckson deck plate center has a 6-pointed starpost into which you can screw one end of the chain with a #6 x 1/2" panhead screw. Attach the other end of the chain to one of the thru-bolts that fasten the mounting rim.



DPA-2

DPA-1 Made in USA  
DPA-2 Made in Korea  
DPA-4 Made in China



## OUR LINE OF CERTIFIED DECK PLATES INCLUDES

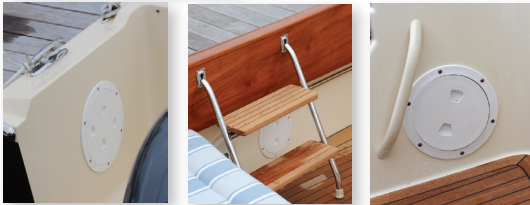
- screw-out and pry-out styles
- standard or thin trim rings
- 3 different sizes
- 3 different surface textures,
- multiple material selections

In addition, to give you years of dependability, Beckson has developed proprietary resin formulations to insure superior strength, durability, and weather/UV resistance. All proprietary resins can be color matched to your color scheme.

All Beckson products are available from fine marine dealers throughout the United States. Contact us for technical help, installation advice, and international purchasing assistance.

**sales@beckson.com**

**203-333-1412**



## VISIT OUR WEBSITE, TOO!

DECK PLATE INSTALLATION INSTRUCTIONS ARE INCLUDED WITH CONSUMER PRODUCTS AND ALSO MAY BE DOWNLOADED FROM [BECKSON.COM](http://BECKSON.COM)

**[www.beckson.com](http://www.beckson.com)**



**BECKSON MARINE**  
165 HOLLAND AVENUE  
BRIDGEPORT, CT 06605

BECKSON® and the mark BXN®, are registered trademarks of Beckson.

**IMPORTANT NOTICE:** BECKSON MAKES NO WARRANTIES, EXPRESS OR IMPLIED, INCLUDING BUT NOT LIMITED TO, ANY IMPLIED WARRANTY OF MERCHANTABILITY OR FITNESS FOR A PARTICULAR PURPOSE. User is responsible for determining whether a Beckson product is fit for a particular purpose and suitable for user's method of application. LIMITATIONS OF REMEDIES AND LIABILITY: If any Beckson product is proved to be defective, THE EXCLUSIVE REMEDY, AT BECKSON'S OPTION, SHALL BE TO REFUND THE PURCHASE PRICE OF OR TO REPAIR OR REPLACE THE DEFECTIVE BECKSON PRODUCT. Beckson shall not otherwise be liable for loss or damages, whether direct, indirect, special, incidental, or consequential, regardless of the legal theory asserted, including negligence, warranty, or strict liability. Retailers are not authorized to make warranty determinations. Send product directly to Beckson.

ALL CONTENTS OF THIS PUBLICATION IN ANY FORM, UNLESS OTHERWISE NOTED, ARE © 2018 BECKSON MARINE, INC.